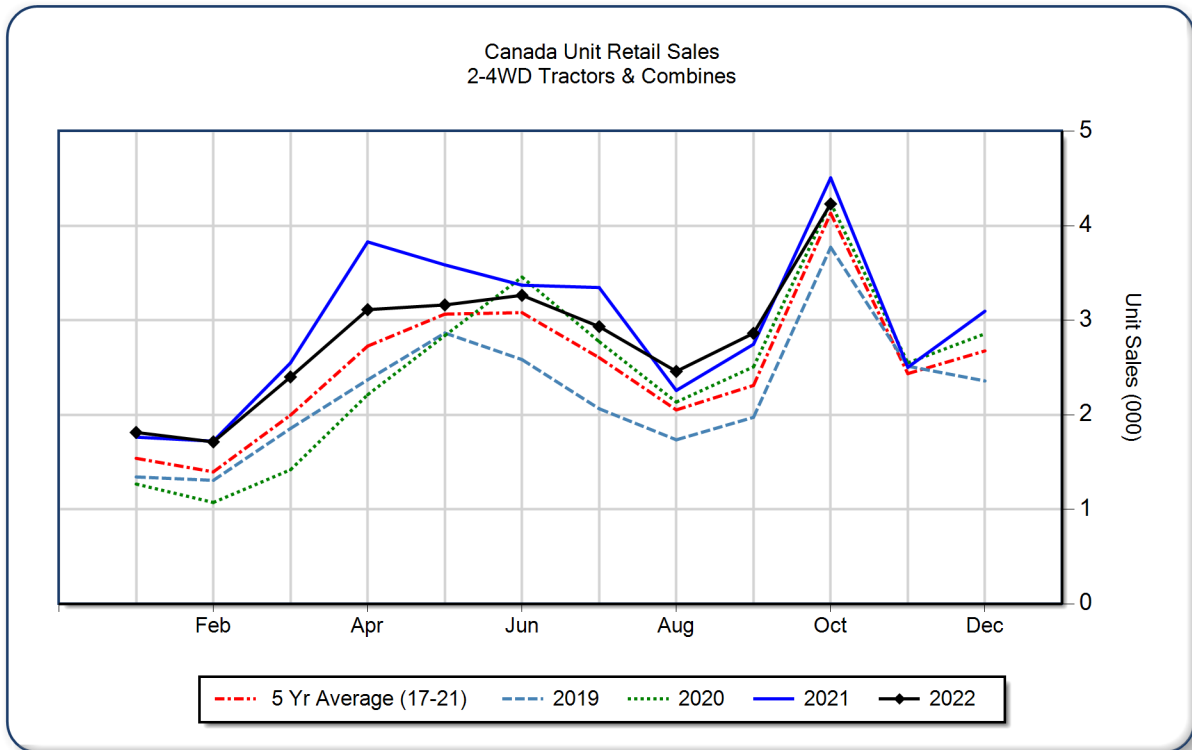


**AEM Canada Ag Tractor and Combine Report
 October 2022**

Copyright, AEM. All rights reserved. If data is referenced, please acknowledge AEM as the source.

	October			YTD - October			Beginning Inventory Oct 2022
	2022	2021	%Chg	2022	2021	%Chg	
2WD Farm Tractors							
< 40 HP	2,043	2,253	-9.3	16,815	18,470	-9.0	8,205
40 < 100 HP	1,114	1,279	-12.9	5,590	5,831	-4.1	3,046
100+ HP	491	528	-7.0	3,187	3,096	2.9	1,503
Total 2WD Farm Tractors	3,648	4,060	-10.1	25,592	27,397	-6.6	12,754
4WD Farm Tractors	87	73	19.2	623	662	-5.9	67
Total Farm Tractors	3,735	4,133	-9.6	26,215	28,059	-6.6	12,821
Self-Prop Combines	496	374	32.6	1,734	1,616	7.3	350



The AEM Ag Tractor and Combine Report is provided monthly and is derived from AEM member companies through proprietary statistical reporting programs. The data is provided by AEM members and represents preliminary monthly retail sales of Ag equipment. Separate reports are available for the U.S., Canada and Russia. For more information, please visit: <https://www.aem.org/market-share-statistics/us-ag-tractor-and-combine-reports>. **Attention Media:** To speak with an AEM spokesperson about the data, please contact Sandra Mason at smason@aem.org.